

Family

BE READY

- Notify the school of anything that may affect my child's work or behaviour; including informing us if my child or anyone in the household is unwell with symptoms of Coronavirus and therefore self isolating (via digital communication—school office email or telephone)
- Keep my child home if they present any of the symptoms of Coronavirus (as outlined by the Government)
- Make sure that my child arrives at and is collected from school within their staggered time, ideally with one family member only, to avoid crowds.
- Ensure that my child arrives in clean uniform each day with only essential items (lunchbox, water bottle & their outdoor towel/rug, reading book).

BE RESPECTFUL

- Support the school behaviour and anti bullying policy and support our zero tolerance approach to any behaviour that puts children and staff at risk.
- Be polite and respectful to everyone in our school community (children, staff, parents, visitors and governors)
- Support the school's Christian ethos, our school rules and our half termly values.

BE SAFE

- Keep to the one way system on arrival and departure from school and maintain social distancing.
- Ensure my child washes their hands frequently, and always on arrival and departure (see reverse)
- Support the school approach to online safety (see pupil section) and not deliberately upload or add any images, sounds or text that could upset or offend **any** member of the school community.
- Help my child stay safe by following the online safety rules and talk about home/school learning together.

Pupil

BE READY

- To try my best in all I do, not giving up when it's difficult
- Arrive at school on time ideally, with one member from family and within the staggered time.
- Wear clean uniform each day and be dressed appropriately for the weather.
- Only bring the essential equipment I need for school; lunchbox, reading book, water bottle & an outdoor towel/rug

BE RESPECTFUL

- Be polite and respectful to everyone in our school community (children, staff, parents, visitors and governors)
- Take responsibility for my behaviour and follow the school rules.
- Live our Christian values.

BE SAFE

- Keep to the one way system in and around the school grounds and keep a safe distance from others where possible.
- Remove face coverings (if worn) on arrival as they are not required in school
- Wash my hands frequently and efficiently throughout the day.
- Stay within my class or year group and the designated areas explained by staff
- Follow our online safety rules and use only age appropriate social media sites, games and apps

Be ready, respectful and safe at all times

Staff

BE READY

- Deliver a high standard of care and teaching, supporting the needs and abilities of your child
- Provide a safe, positive and engaging curriculum and school experience
- Maintain clean, purposeful learning spaces and equipment for the day.

BE RESPECTFUL

- Work together with everyone in our school community (children, staff, families, visitors and governors) to share appropriate support or guidance whilst following social distancing measures.
- Keep families informed about any incidents or issues as appropriate, via digital communication (school office mail or telephone)
- Provide a caring environment living by our Christian values and beliefs

BE SAFE

- Care for your child's safety (including online safety) and happiness and listen to any concerns in a professional and supportive way
- Ensure children stay within their class or year group and the designated areas and follow the one way system.
- Ensure your child receives the first aid and TLC they need.

Signed Headteacher;

A Wallis

Hand-washing technique with soap and water



1 Wet hands with water



2 Apply enough soap to cover all hand surfaces



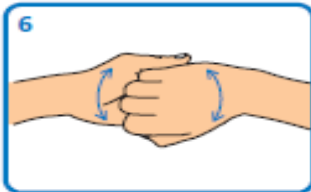
3 Rub hands palm to palm



4 Rub back of each hand with palm of other hand with fingers interlaced



5 Rub palm to palm with fingers interlaced



6 Rub with back of fingers to opposing palms with fingers interlocked



7 Rub each thumb clasped in opposite hand using a rotational movement



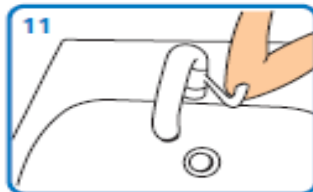
8 Rub tips of fingers in opposite palm in a circular motion



9 Rub each wrist with opposite hand



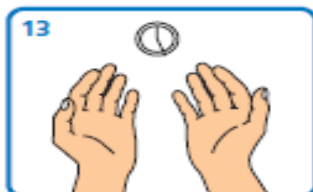
10 Rinse hands with water



11 Use elbow to turn off tap



12 Dry thoroughly with a single-use towel



13 Hand washing should take 15-30 seconds

HOME-SCHOOL AGREEMENT

*Wider School Opening
September 2020*



*In sending your child to St Catherine's,
you are agreeing to our Home School
Agreement*

**Aim high; in life, in learning,
with God, together**